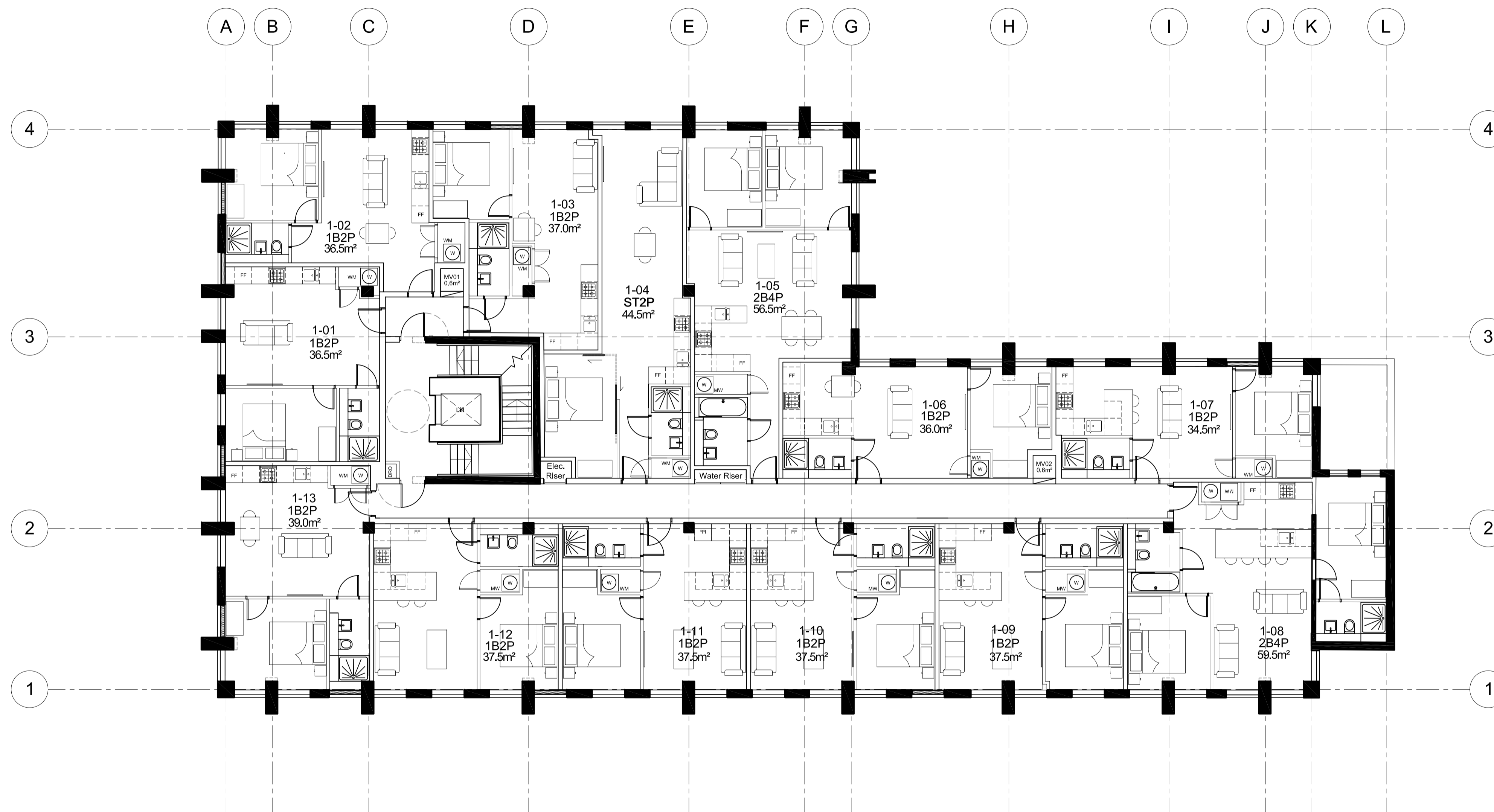


version	date	author	version notes
T1	As dwg	As dwg	Initial issue



01 First Floor Plan - Proposed
Scale 1:100

TENDER INFORMATION DISCLAIMER
This drawing has been produced for Titan Property for the project/site named as Dolphin House and is produced only for their benefit. Although all reasonable endeavours have been taken to see that the information contained on this drawing is correct, it should not be relied upon by any third party for any tender they prepare.
© Orbit Architects May 2018



TENDER
Orbit Architects

project: Dolphin Bridge House, Rockingham Road, Uxbridge, UB8 2XL
 title: GA - First Floor Plan - Proposed
 scale: 1:100 @ A1 date: APR'18 author: MJF job no.: 1638-G1-101 ver.: T1
 DO NOT SCALE FROM THIS DRAWING: Verify all dimensions on site
 © Orbit Architects 83 Blackfriars Road, London SE1 8HA t. 020 7593 3380 w. www.orbitarchitects.com e. info@orbitarchitects.com