



Exclusive Club



Vitality pool



CALICO WHARF

LOBBY - 214

LUXURY OF NATURE SPACE & WELLBEING



Gym



Co-Working Space



Multi-Function Room



Concierge

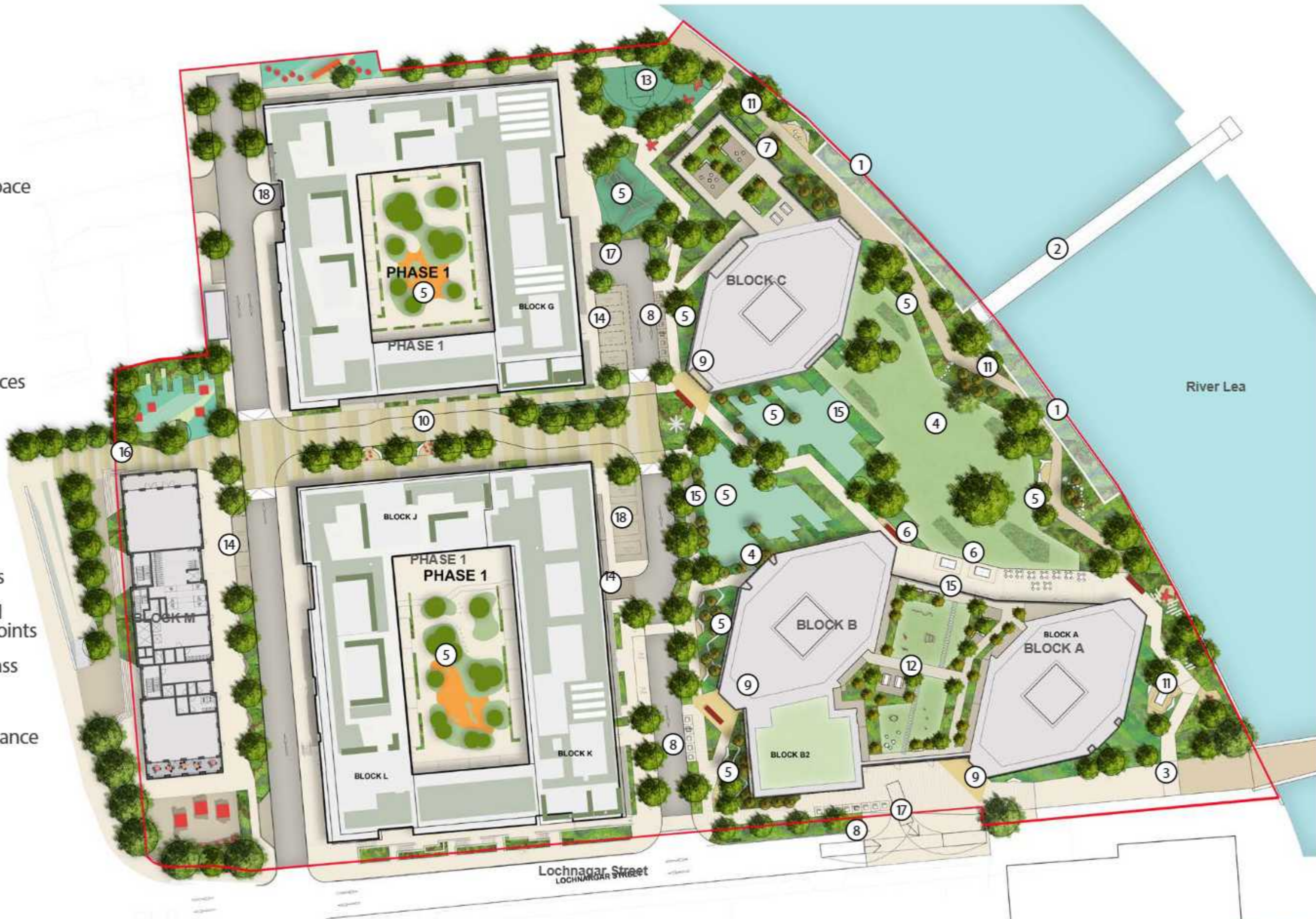
FRASER
& Co

This is an illustration and not a photograph. The actual appearance of the property may vary. Fraser & Co is not responsible for any errors or omissions. All rights reserved. © 2024 Fraser & Co. All rights reserved.

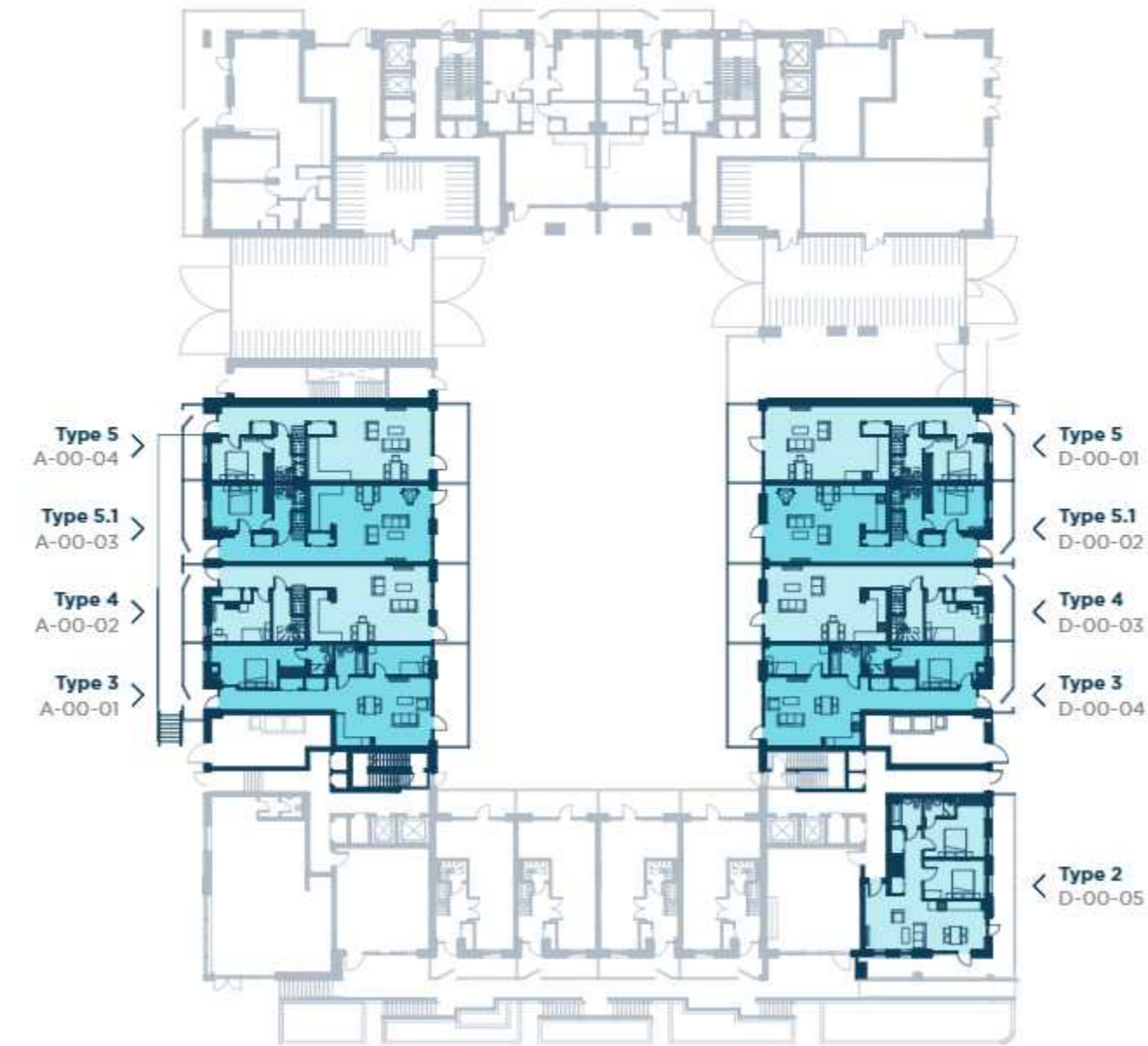
An architectural rendering of a modern residential development. The scene features several tall, slender apartment towers with light-colored facades and dark window frames. Each tower has a series of cantilevered balconies with dark metal railings. In the foreground, there are shorter, wider apartment buildings with a similar design language. The ground level is landscaped with greenery, including trees and flowering plants. A body of water is visible in the lower foreground, reflecting the buildings and sky. The sky is a mix of blue and soft, warm tones, suggesting a sunrise or sunset. The overall aesthetic is clean, modern, and urban.

**Introducing
The Morris
Apartments.**
**The first phase
of luxury homes
at Calico Wharf.**

- 1 Intertidal terraces
- 2 UKPN Bridge
- 3 New proposed bridge landing
- 4 Riverside Park Public open amenity space
- 5 Play spaces
- 6 Spill out seating area
- 7 Defensible planting to buildings
- 8 Iceberg bins
- 9 Main residential entrances
- 10 Green Link
- 11 Riverside Walk
- 12 Communal residential podium garden
- 13 Basketball area
- 14 Accessible parking bays
- 15 Informal seating/ Social edges and gathering points
- 16 Connection to underpass
- 17 Vehicular turning area
- 18 Basement car park entrance



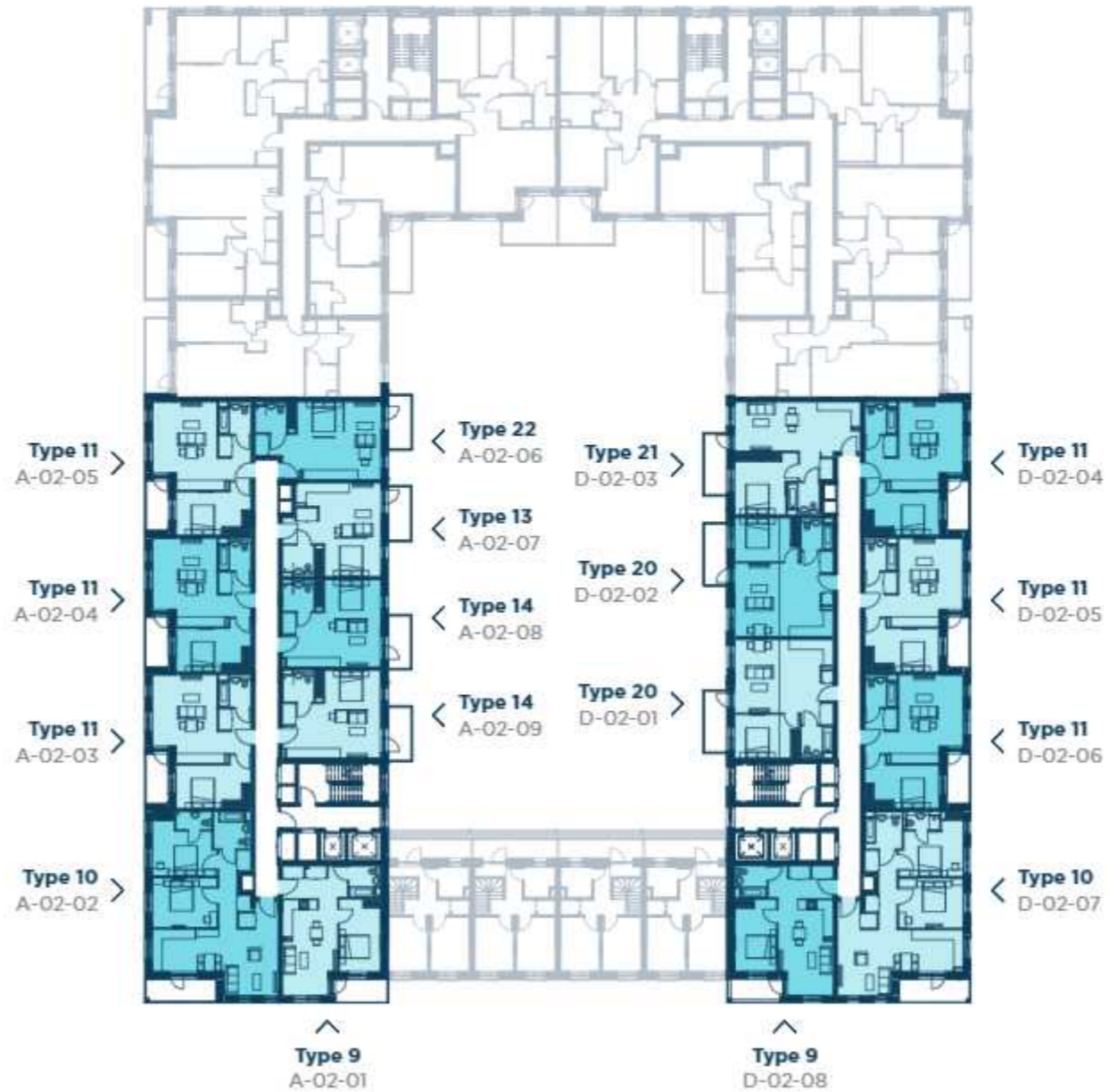
Ground floor plan.



First floor plan.



Second floor plan.



Third floor plan.



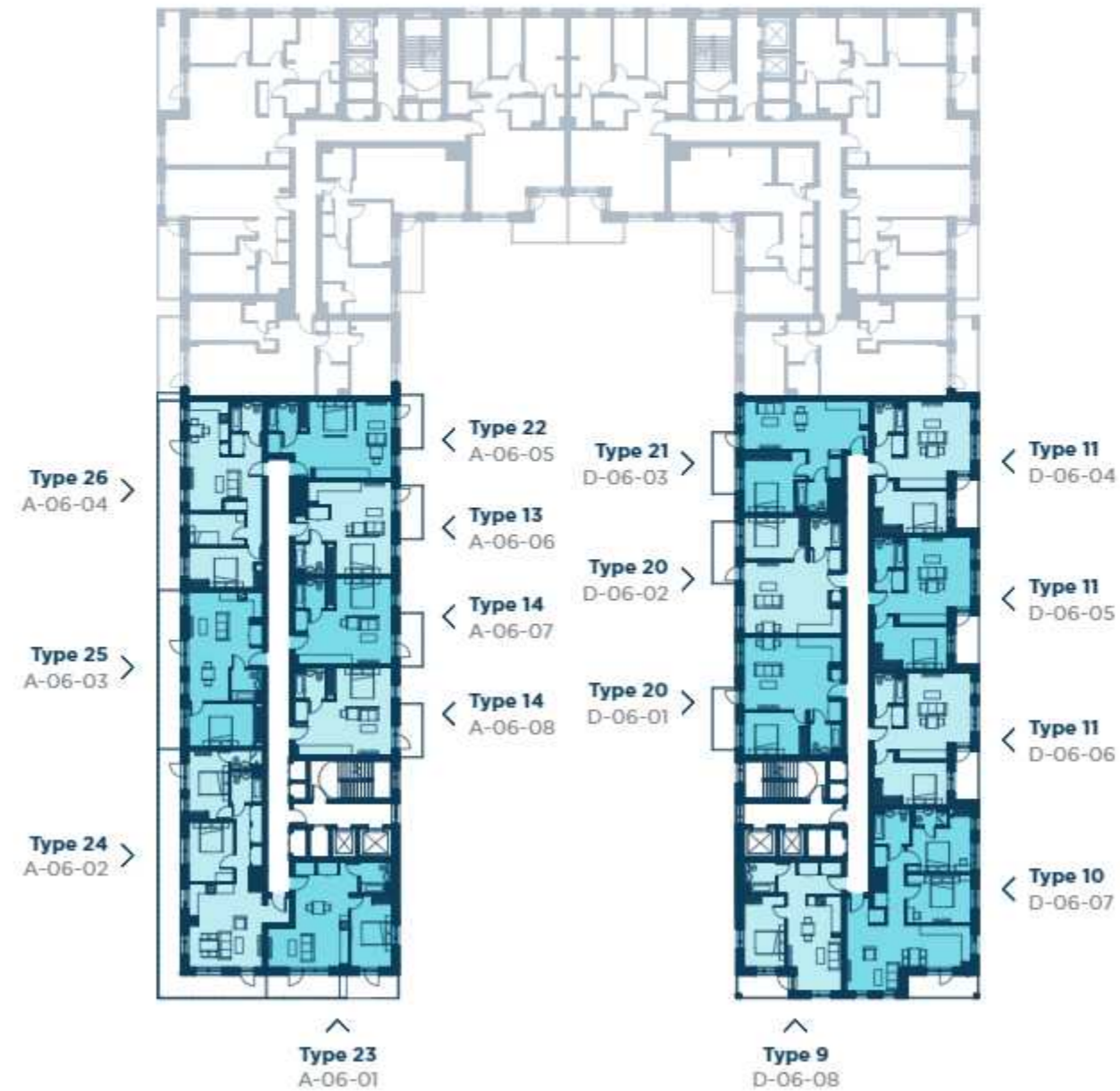
Fourth floor plan.



Fifth floor plan.



Sixth floor plan.



Seventh floor plan.





Type 2

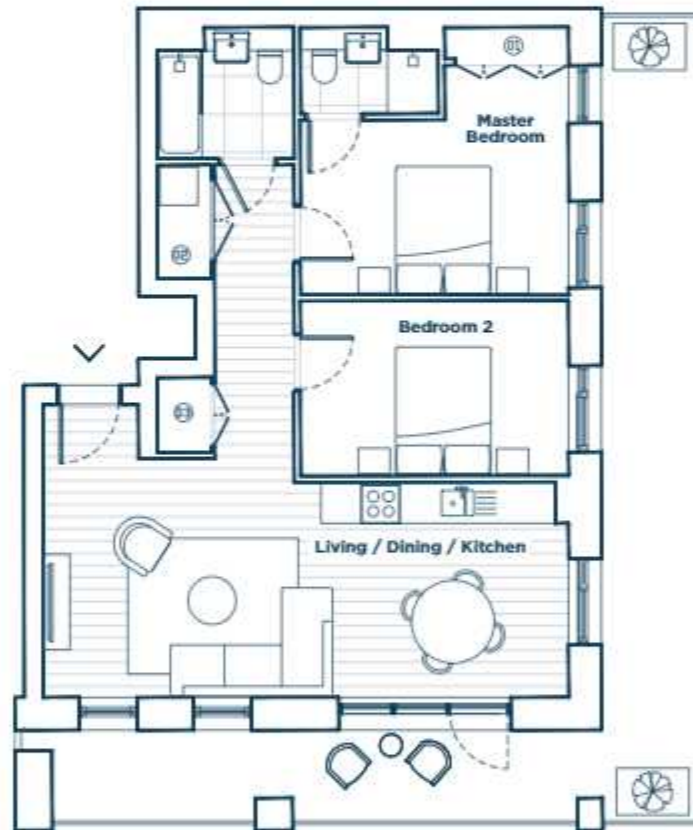
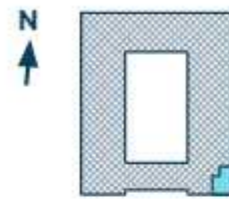
2 bed apartment

Internal area: 76.9 m² / 827.7 ft²

Balcony area: 31.6 m² / 340.1 ft²

Floors: GL

Plots: D-00-05



- 01. Wardrobe
- 02. Utility cupboard (with washing machine)
- 03. Storage

Maximum dimensions are shown. They are intended as a guide only and are subject to change. Not all plans are to scale. Please speak to the sales negotiator for further information.



Type 3

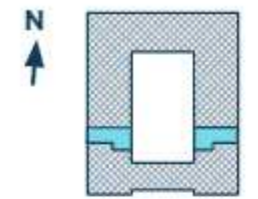
2 bed apartment

Internal area: 83.9 m² / 903.1 ft²

Balcony area: 15.6 m² / 167.9 ft²

Floors: GL

Plots: A-00-01, D-00-04



- 01. Wardrobe
- 02. Utility cupboard (with washing machine)
- 03. Storage

Maximum dimensions are shown. They are intended as a guide only and are subject to change. Not all plans are to scale. Please speak to the sales negotiator for further information.



Type 4

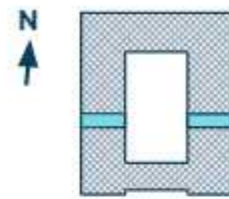
3 bed duplex apartment

Internal area: 122.5 m² / 1318.6 ft²

Balcony area: 12.7 m² / 136.7 ft²

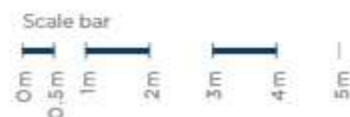
Floors: GL, L1

Plots: A-00-02, D-00-03



- 01. Wardrobe
- 02. Utility cupboard (with washing machine)
- 03. Storage

Maximum dimensions are shown. They are intended as a guide only and are subject to change. Not all plans are to scale. Please speak to the sales negotiator for further information.



Type 5

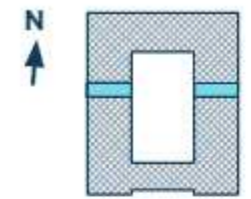
3 bed duplex apartment

Internal area: 110.8 m² / 1192.6 ft²

Balcony area: 11.5 m² / 123.8 ft²

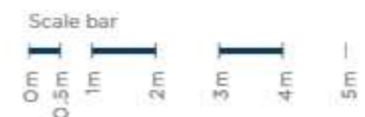
Floors: GL, L1

Plots: A-00-04, D-00-01



- 01. Wardrobe
- 02. Utility cupboard (with washing machine)
- 03. Storage

Maximum dimensions are shown. They are intended as a guide only and are subject to change. Not all plans are to scale. Please speak to the sales negotiator for further information.



Type 5.1

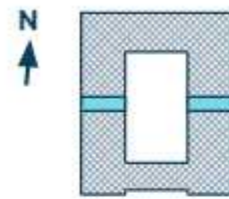
3 bed duplex apartment

Internal area: 114.5 m² / 1232.5 ft²

Balcony area: 12.8 m² / 137.8 ft²

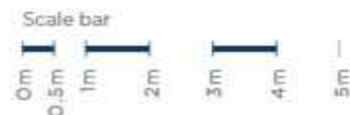
Floors: GL, L1

Plots: A-00-03, D-00-02



- 01. Wardrobe
- 02. Utility cupboard (with washing machine)
- 03. Storage

Maximum dimensions are shown. They are intended as a guide only and are subject to change. Not all plans are to scale. Please speak to the sales negotiator for further information.



Type 9

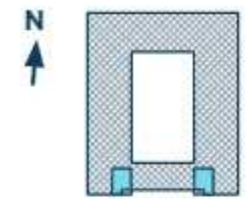
1 bed apartment

Internal area: 50.7 m² / 545.7 ft²

Balcony area: 5.0 m² / 53.8 ft²

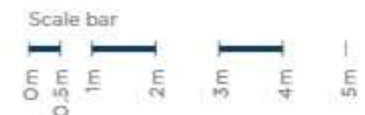
Floors: L1, L2, L3, L4, L5 & L6

Plots: A-01-01, D-01-09, A-02-01, D-02-08, A-03-01, D-03-08, A-04-01, D-04-08, A-05-01, D-05-08, D-06-08



- 01. Wardrobe
- 02. Utility cupboard (with washing machine)
- 03. Storage

Maximum dimensions are shown. They are intended as a guide only and are subject to change. Not all plans are to scale. Please speak to the sales negotiator for further information.



Type 10

2 bed apartment

Internal area: 82.3 m² / 885.9 ft²

Balcony area: 6.6 m² / 71.0 ft²

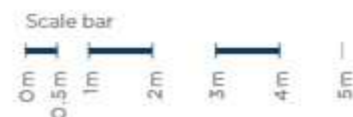
Floors: L1, L2, L3, L4, L5 & L6

Plots: A-01-02, D-01-08, A-02-02, D-02-07, A-03-02,
D-03-07, A-04-02, D-04-07, A-05-02, D-05-07,
D-06-07,



- 01. Wardrobe
- 02. Utility cupboard (with washing machine)
- 03. Storage

Maximum dimensions are shown. They are intended as a guide only and are subject to change. Not all plans are to scale. Please speak to the sales negotiator for further information.



Type 11

1 bed apartment

Internal area: 51.3 m² / 552.1 ft²

Balcony area: 5.0 m² / 53.8 ft²

Floors: L1, L2, L3, L4, L5, L6 & L7

Plots: A-01-03, D-01-07, A-02-03, A-02-04, A-02-05,
D-02-04, D-02-05, D-02-06, A-03-03, A-03-04,
A-03-05, D-03-04, D-03-05, D-03-06, A-04-03,
A-04-04, A-04-05, D-04-04, D-04-05, D-04-06,
A-05-03, A-05-04, A-05-05, D-05-04, D-05-05,
D-05-06, D-06-04, D-06-05, D-06-06, D-07-04



- 01. Wardrobe
- 02. Utility cupboard (with washing machine)
- 03. Storage

Maximum dimensions are shown. They are intended as a guide only and are subject to change. Not all plans are to scale. Please speak to the sales negotiator for further information.



Type 13

Suite apartment

Internal area: 38.2 m² / 411.2 ft²

Balcony area: 5.3 m² / 57.0 ft²

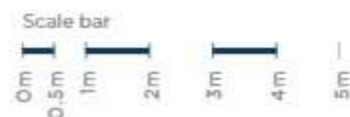
Floors: L1, L2, L3, L4, L5 & L6

Plots: A-01-07, A-02-07, A-03-07, A-04-07, A-05-07,
A-06-06



- 01. Wardrobe
- 02. Utility cupboard
(with washing machine)

Maximum dimensions are shown. They are intended as a guide only and are subject to change. Not all plans are to scale. Please speak to the sales negotiator for further information.



Type 14

Suite apartment

Internal area: 37.7 m² / 405.8 ft²

Balcony area: 5.3 m² / 57.0 ft²

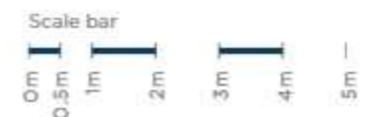
Floors: L1, L2, L3, L4, L5 & L6

Plots: A-01-08, A-01-09, A-02-08, A-02-09, A-03-08,
A-03-09, A-04-08, A-04-09, A-05-08, A-05-09,
A-06-07, A-06-08



- 01. Wardrobe
- 02. Utility cupboard
(with washing machine)

Maximum dimensions are shown. They are intended as a guide only and are subject to change. Not all plans are to scale. Please speak to the sales negotiator for further information.



Type 20

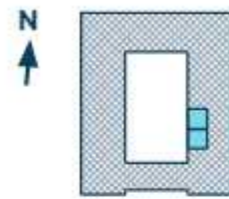
1 bed apartment

Internal area: 51.3 m² / 552.2 ft²

Balcony area: 6.2 m² / 66.7 ft²

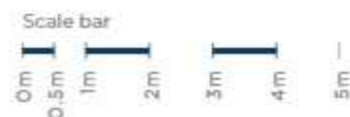
Floors: L1, L2, L3, L4, L5, L6 & L7

Plots: D-01-01, D-01-02, D-02-01, D-02-02, D-03-01, D-03-02, D-04-01, D-04-02, D-05-01, D-05-02, D-06-01, D-06-02, D-07-01, D-07-02



- 01. Wardrobe
- 02. Utility cupboard (with washing machine)
- 03. Storage

Maximum dimensions are shown. They are intended as a guide only and are subject to change. Not all plans are to scale. Please speak to the sales negotiator for further information.



Type 21

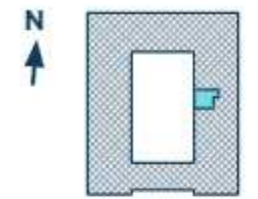
1 bed apartment

Internal area: 52.8 m² / 568.3 ft²

Balcony area: 6.2 m² / 66.7 ft²

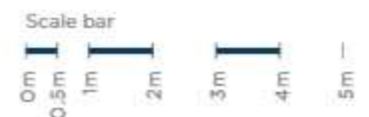
Floors: L1, L2, L3, L4, L5, L6 & L7

Plots: D-01-03, D-02-03, D-03-03, D-04-03, D-05-03, D-06-03, D-07-03



- 01. Wardrobe
- 02. Utility cupboard (with washing machine)

Maximum dimensions are shown. They are intended as a guide only and are subject to change. Not all plans are to scale. Please speak to the sales negotiator for further information.



Type 22

Suite apartment

Internal area: 40.0 m² / 430.55 ft²

Balcony area: 5.3 m² / 57.0 ft²

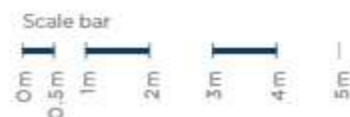
Floors: L2, L3, L4, L5 & L6

Plots: A-01-06, A-02-06, A-03-06, A-04-06, A-05-06,
A-06-05



- 01. Wardrobe
- 02. Utility cupboard
(with washing machine)

Maximum dimensions are shown. They are intended as a guide only and are subject to change. Not all plans are to scale. Please speak to the sales negotiator for further information.



Type 23

1 bed apartment

Internal area: 50.7 m² / 545.7 ft²

Balcony area: 12.1 m² / 130.2 ft²

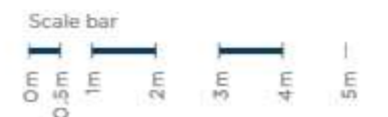
Floors: L6

Plots: A-06-01



- 01. Wardrobe
- 02. Utility cupboard
(with washing machine)
- 03. Storage

Maximum dimensions are shown. They are intended as a guide only and are subject to change. Not all plans are to scale. Please speak to the sales negotiator for further information.



Type 24

2 bed apartment

Internal area: 73.6 m² / 792.2 ft²

Balcony area: 28.4 m² / 305.6 ft²

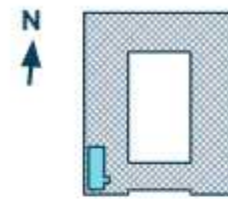
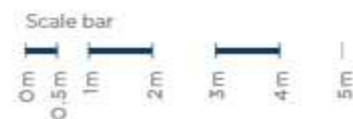
Floors: L6

Plots: A-06-02



- 01. Wardrobe
- 02. Utility cupboard (with washing machine)
- 03. Storage

Maximum dimensions are shown. They are intended as a guide only and are subject to change. Not all plans are to scale. Please speak to the sales negotiator for further information.



Type 25

1 bed apartment

Internal area: 50.9 m² / 547.9 ft²

Balcony area: 13.6 m² / 146.3 ft²

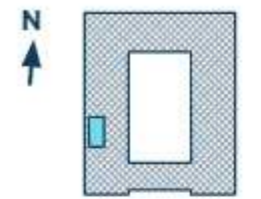
Floors: L6

Plots: A-06-03



- 01. Wardrobe
- 02. Utility cupboard (with washing machine)

Maximum dimensions are shown. They are intended as a guide only and are subject to change. Not all plans are to scale. Please speak to the sales negotiator for further information.



Type 26

2 bed apartment

Internal area: 61.9 m² / 666.3 ft²

Balcony area: 19.2 m² / 206.6 ft²

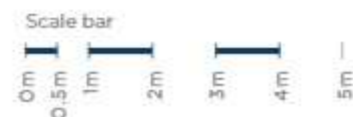
Floors: L6

Plots: A-06-04



- 01. Wardrobe
- 02. Utility cupboard (with washing machine)
- 03. Storage

Maximum dimensions are shown. They are intended as a guide only and are subject to change. Not all plans are to scale. Please speak to the sales negotiator for further information.



Type 27

2 bed apartment

Internal area: 80.8 m² / 869.7 ft²

Balcony area: 31.2 m² / 335.8 ft²

Floors: L7

Plots: D-07-06



- 01. Wardrobe
- 02. Utility cupboard (with washing machine)
- 03. Storage

Maximum dimensions are shown. They are intended as a guide only and are subject to change. Not all plans are to scale. Please speak to the sales negotiator for further information.



Type 28

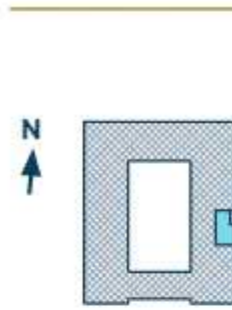
2 bed apartment

Internal area: 61.6 m² / 673.8 ft²

Balcony area: 6.7 m² / 72.1 ft²

Floors: L7

Plots: D-07-05



- 01. Wardrobe
- 02. Utility cupboard (with washing machine)
- 03. Storage

Maximum dimensions are shown. They are intended as a guide only and are subject to change. Not all plans are to scale. Please speak to the sales negotiator for further information.



Please call our Sales Advisors for further information or to arrange an appointment

Unit 12 West End Quay, 1 South Wharf Road, Paddington, London, W2 1JB

T: 020 7723 1284

E: NewHomes@fraser.uk.com

W: www.fraser.uk.com