



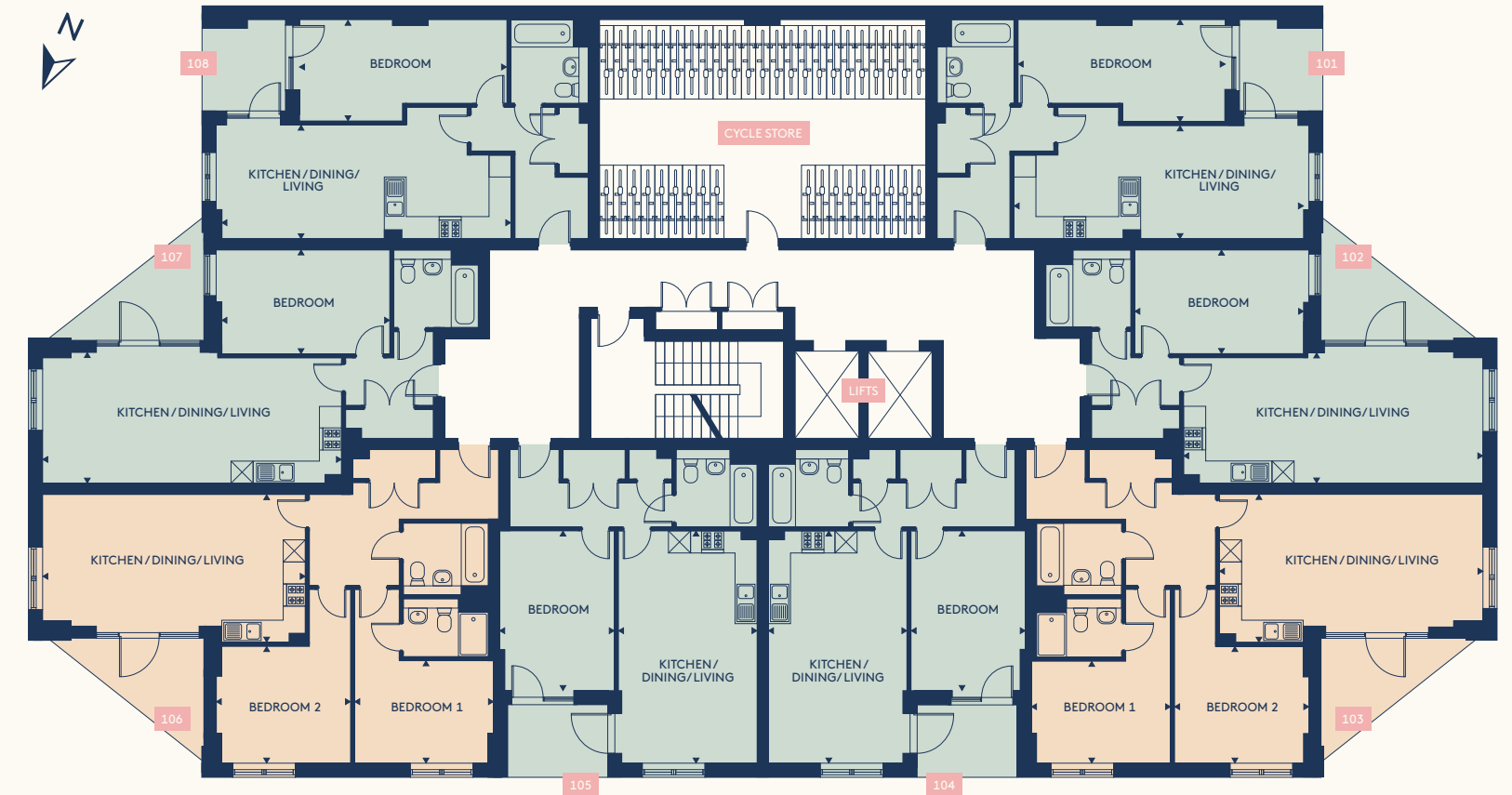
**BOOKBINDER  
POINT**

**ACTON W3**



Computer Generated Image

## FLOORPLANS - 1F

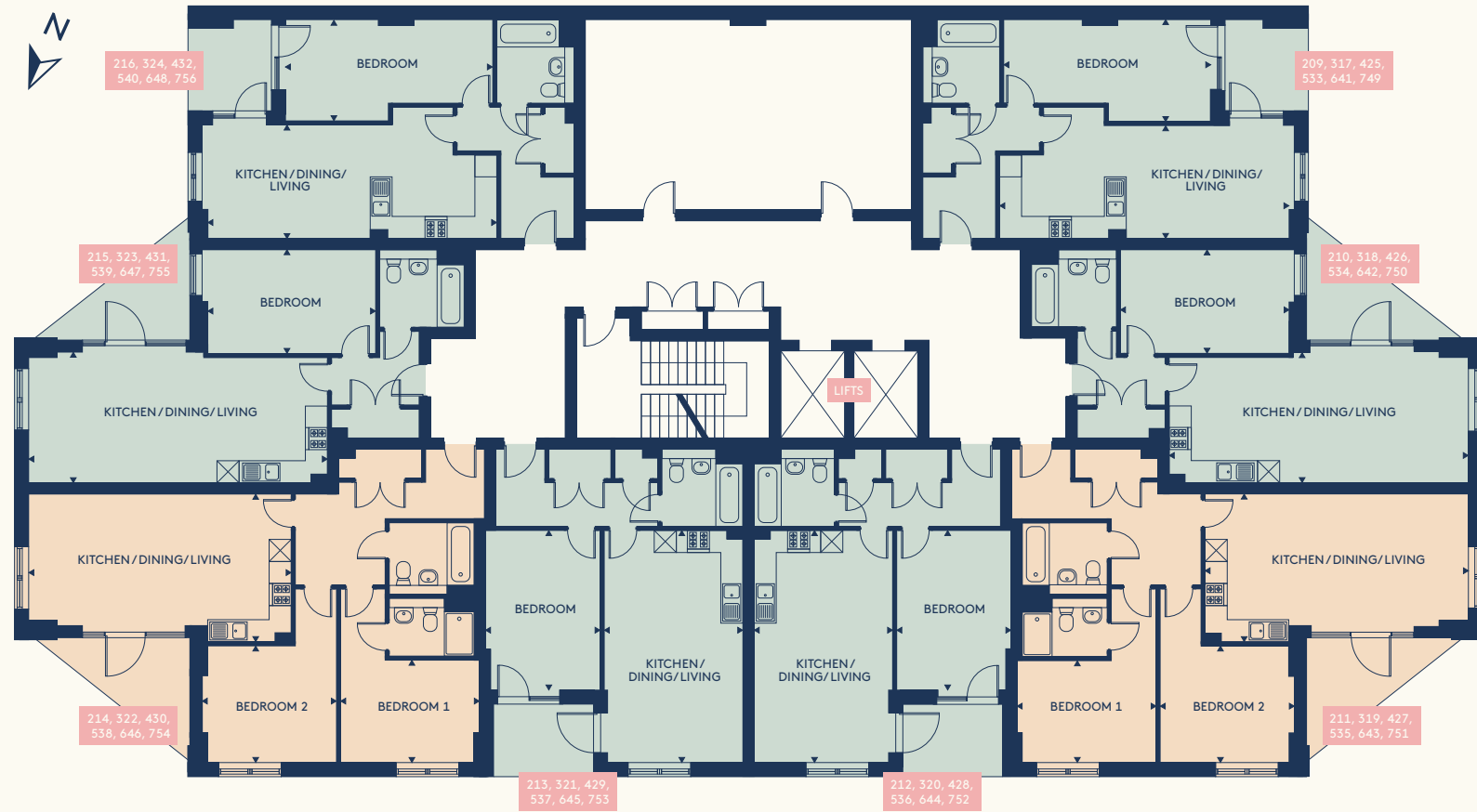


<p><b>APT 101</b></p> <p><b>KITCHEN/DINING/LIVING</b> 7.9 x 3.1 m   25'9" x 10'1" ft</p> <p><b>BEDROOM 1</b> 5.6 x 2.8 m   18'6" x 9'0" ft</p> <p><b>EXTERNAL AREA</b> 5.0 sqm   53.8 sqft</p> <p><b>TOTAL INTERNAL AREA</b> 53.9 sqm   580.2 sqft</p>	<p><b>APT 102</b></p> <p><b>KITCHEN/DINING/LIVING</b> 8.1 x 3.6 m   26'8" x 11'8" ft</p> <p><b>BEDROOM 1</b> 4.6 x 2.8 m   15'0" x 9'3" ft</p> <p><b>EXTERNAL AREA</b> 7.1 sqm   76.4 sqft</p> <p><b>TOTAL INTERNAL AREA</b> 53.9 sqm   580.2 sqft</p>	<p><b>APT 103</b></p> <p><b>KITCHEN/DINING/LIVING</b> 7.2 x 4.0 m   23'5" x 13'2" ft</p> <p><b>BEDROOM 1</b> 3.8 x 2.8 m   12'4" x 9'1" ft</p> <p><b>BEDROOM 2</b> 3.7 x 3.2 m   12'0" x 10'4" ft</p> <p><b>EXTERNAL AREA</b> 7.1 sqm   76.4 sqft</p> <p><b>TOTAL INTERNAL AREA</b> 76.1 sqm   819.1 sqft</p>	<p><b>APT 104</b></p> <p><b>KITCHEN/DINING/LIVING</b> 6.3 x 3.8 m   20'8" x 12'4" ft</p> <p><b>BEDROOM 1</b> 4.4 x 3.1 m   14'3" x 10'2" ft</p> <p><b>EXTERNAL AREA</b> 5.4 sqm   58.1 sqft</p> <p><b>TOTAL INTERNAL AREA</b> 52.7 sqm   567.3 sqft</p>
<p><b>APT 105</b></p> <p><b>KITCHEN/DINING/LIVING</b> 6.3 x 3.8 m   20'8" x 12'4" ft</p> <p><b>BEDROOM 1</b> 4.4 x 3.1 m   14'3" x 10'2" ft</p> <p><b>EXTERNAL AREA</b> 5.4 sqm   58.1 sqft</p> <p><b>TOTAL INTERNAL AREA</b> 52.7 sqm   567.3 sqft</p>	<p><b>APT 106</b></p> <p><b>KITCHEN/DINING/LIVING</b> 7.2 x 4.0 m   23'5" x 13'2" ft</p> <p><b>BEDROOM 1</b> 3.8 x 2.8 m   12'4" x 9'1" ft</p> <p><b>BEDROOM 2</b> 3.7 x 3.2 m   12'0" x 10'4" ft</p> <p><b>EXTERNAL AREA</b> 7.1 sqm   76.4 sqft</p> <p><b>TOTAL INTERNAL AREA</b> 76.1 sqm   819.1 sqft</p>	<p><b>APT 107</b></p> <p><b>KITCHEN/DINING/LIVING</b> 8.1 x 3.6 m   26'8" x 11'8" ft</p> <p><b>BEDROOM 1</b> 4.6 x 2.8 m   15'0" x 9'3" ft</p> <p><b>EXTERNAL AREA</b> 7.1 sqm   76.4 sqft</p> <p><b>TOTAL INTERNAL AREA</b> 53.9 sqm   580.2 sqft</p>	<p><b>APT 108</b></p> <p><b>KITCHEN/DINING/LIVING</b> 7.9 x 3.1 m   25'9" x 10'1" ft</p> <p><b>BEDROOM 1</b> 5.6 x 2.8 m   18'6" x 9'0" ft</p> <p><b>EXTERNAL AREA</b> 5.0 sqm   53.8 sqft</p> <p><b>TOTAL INTERNAL AREA</b> 53.9 sqm   580.2 sqft</p>

Please note, floor plans and dimensions are taken from architectural drawings and are for guidance only. Dimensions stated are within a tolerance of plus or minus 150mm. Overall dimensions are usually stated and there may be projections into these. Kitchen and bathroom layouts are indicative only.

1 BED ● 2 BED ●

# FLOORPLANS - 2F/3F/4F/5F/6F/7F

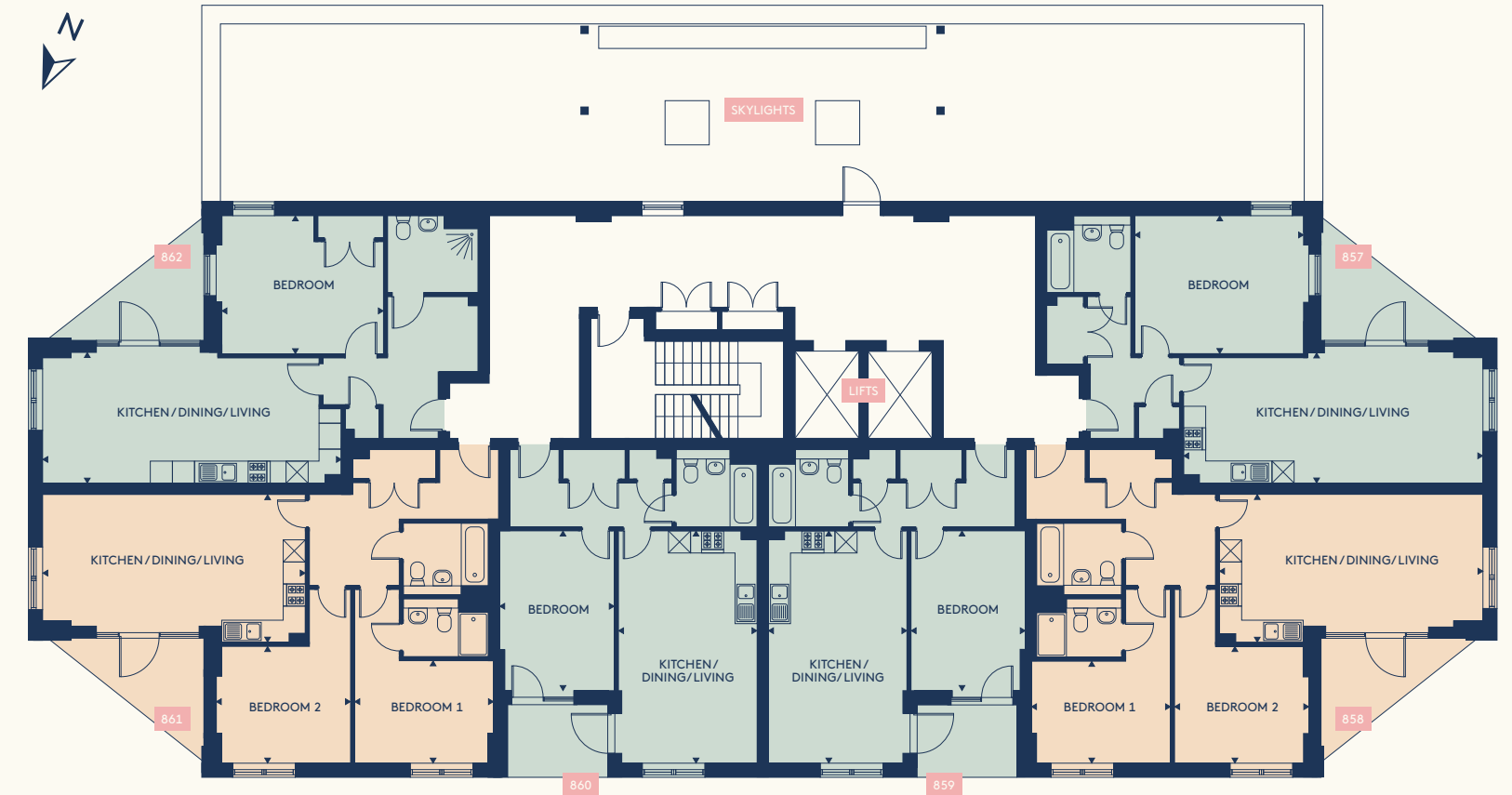


<b>APT 209</b>	KITCHEN/DINING/LIVING 7.9 x 3.1 m   25'9" x 10'1" ft	<b>APT 210</b>	KITCHEN/DINING/LIVING 8.1 x 3.6 m   26'8" x 11'8" ft	<b>APT 211</b>	KITCHEN/DINING/LIVING 7.2 x 4.0 m   23'5" x 13'2" ft	<b>APT 212</b>	KITCHEN/DINING/LIVING 6.3 x 3.8 m   20'8" x 12'4" ft
<b>APT 317</b>	BEDROOM 1 5.6 x 2.8 m   18'6" x 9'0" ft	<b>APT 318</b>	BEDROOM 1 4.6 x 2.8 m   15'0" x 9'3" ft	<b>APT 319</b>	BEDROOM 1 3.8 x 2.8 m   12'4" x 9'1" ft	<b>APT 320</b>	BEDROOM 1 4.4 x 3.1 m   14'3" x 10'2" ft
<b>APT 425</b>	EXTERNAL AREA 5.0 sqm   53.8 sqft	<b>APT 426</b>	EXTERNAL AREA 7.1 sqm   76.4 sqft	<b>APT 427</b>	BEDROOM 2 3.7 x 3.2 m   12'0" x 10'4" ft	<b>APT 428</b>	EXTERNAL AREA 5.4 sqm   58.1 sqft
<b>APT 533</b>	TOTAL INTERNAL AREA 53.9 sqm   580.2 sqft	<b>APT 534</b>	TOTAL INTERNAL AREA 53.9 sqm   580.2 sqft	<b>APT 535</b>	EXTERNAL AREA 7.1 sqm   76.4 sqft	<b>APT 536</b>	TOTAL INTERNAL AREA 52.7 sqm   567.3 sqft
<b>APT 641</b>		<b>APT 642</b>		<b>APT 643</b>	TOTAL INTERNAL AREA 76.1 sqm   819.1 sqft	<b>APT 644</b>	
<b>APT 749</b>		<b>APT 750</b>		<b>APT 751</b>		<b>APT 752</b>	
<b>APT 213</b>	KITCHEN/DINING/LIVING 6.3 x 3.8 m   20'8" x 12'4" ft	<b>APT 214</b>	KITCHEN/DINING/LIVING 7.2 x 4.0 m   23'5" x 13'2" ft	<b>APT 215</b>	KITCHEN/DINING/LIVING 8.1 x 3.6 m   26'8" x 11'8" ft	<b>APT 216</b>	KITCHEN/DINING/LIVING 7.9 x 3.1 m   25'9" x 10'1" ft
<b>APT 321</b>	BEDROOM 1 4.4 x 3.1 m   14'3" x 10'2" ft	<b>APT 322</b>	BEDROOM 1 3.8 x 2.8 m   12'4" x 9'1" ft	<b>APT 323</b>	BEDROOM 1 4.6 x 2.8 m   15'0" x 9'3" ft	<b>APT 324</b>	BEDROOM 1 5.6 x 2.8 m   18'6" x 9'0" ft
<b>APT 429</b>	EXTERNAL AREA 5.4 sqm   58.1 sqft	<b>APT 430</b>	BEDROOM 2 3.7 x 3.2 m   12'0" x 10'4" ft	<b>APT 431</b>	EXTERNAL AREA 7.1 sqm   76.4 sqft	<b>APT 432</b>	EXTERNAL AREA 5.0 sqm   53.8 sqft
<b>APT 537</b>	TOTAL INTERNAL AREA 52.7 sqm   567.3 sqft	<b>APT 538</b>	EXTERNAL AREA 7.1 sqm   76.4 sqft	<b>APT 539</b>	TOTAL INTERNAL AREA 53.9 sqm   580.2 sqft	<b>APT 540</b>	TOTAL INTERNAL AREA 53.9 sqm   580.2 sqft
<b>APT 645</b>		<b>APT 646</b>		<b>APT 647</b>		<b>APT 648</b>	
<b>APT 753</b>		<b>APT 754</b>		<b>APT 755</b>		<b>APT 756</b>	

Please note, floor plans and dimensions are taken from architectural drawings and are for guidance only. Dimensions stated are within a tolerance of plus or minus 150mm. Overall dimensions are usually stated and there may be projections into these. Kitchen and bathroom layouts are indicative only.

1 BED ● 2 BED ●

# FLOORPLANS - 8F

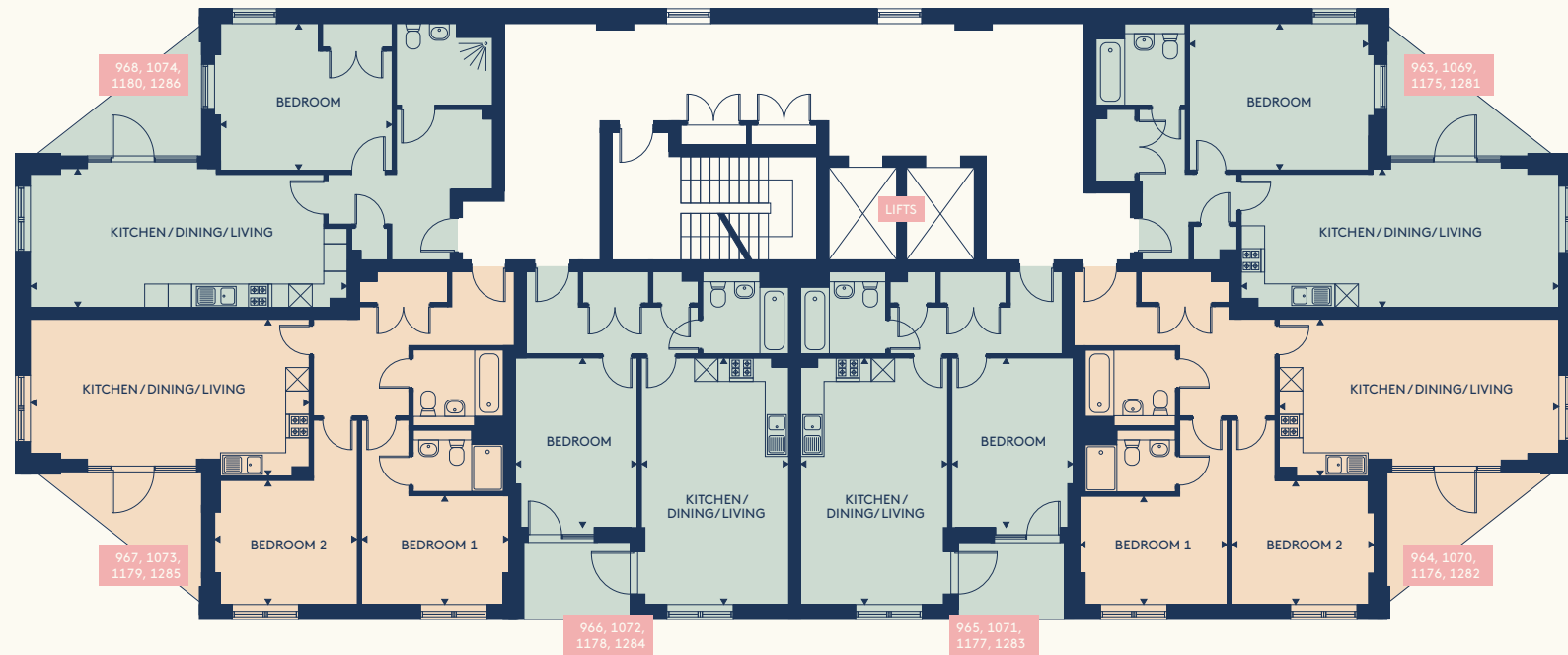


<b>APT 857</b>	KITCHEN/DINING/LIVING 8.1 x 3.6 m   26'8" x 11'8" ft	<b>APT 858</b>	KITCHEN/DINING/LIVING 7.2 x 4.0 m   23'5" x 13'2" ft	<b>APT 859</b>	KITCHEN/DINING/LIVING 6.3 x 3.8 m   20'8" x 12'4" ft	<b>APT 860</b>	KITCHEN/DINING/LIVING 6.3 x 3.8 m   20'8" x 12'4" ft
	BEDROOM 1 4.6 x 3.8 m   15'0" x 12'3" ft		BEDROOM 1 3.8 x 2.8 m   12'4" x 9'1" ft		BEDROOM 1 4.4 x 3.1 m   14'3" x 10'2" ft		BEDROOM 1 4.4 x 3.1 m   14'3" x 10'2" ft
	EXTERNAL AREA 7.1 sqm   76.4 sqft		BEDROOM 2 3.7 x 3.2 m   12'0" x 10'4" ft		EXTERNAL AREA 5.4 sqm   58.1 sqft		EXTERNAL AREA 5.4 sqm   58.1 sqft
	TOTAL INTERNAL AREA 61.7 sqm   664.1 sqft		EXTERNAL AREA 7.1 sqm   76.4 sqft		TOTAL INTERNAL AREA 52.7 sqm   567.3 ft		TOTAL INTERNAL AREA 52.7 sqm   567.3 ft
			TOTAL INTERNAL AREA 76.1 sqm   819.1 sqft				
<b>APT 861</b>	KITCHEN/DINING/LIVING 7.2 x 4.0 m   23'5" x 13'2" ft	<b>APT 862</b>	KITCHEN/DINING/LIVING 8.1 x 3.6 m   26'8" x 11'8" ft				
	BEDROOM 1 3.8 x 2.8 m   12'4" x 9'1" ft		BEDROOM 1 4.4 x 3.8 m   14'5" x 12'3" ft				
	BEDROOM 2 3.7 x 3.2 m   12'0" x 10'4" ft		EXTERNAL AREA 7.1 sqm   76.4 sqft				
	EXTERNAL AREA 7.1 sqm   76.4 sqft		TOTAL INTERNAL AREA 62.1 sqm   668.4 sqft				
	TOTAL INTERNAL AREA 76.1 sqm   819.1 sqft						

Please note, floor plans and dimensions are taken from architectural drawings and are for guidance only. Dimensions stated are within a tolerance of plus or minus 150mm. Overall dimensions are usually stated and there may be projections into these. Kitchen and bathroom layouts are indicative only.

1 BED ● 2 BED ●

# FLOORPLANS - 9F/10F/11F/12F

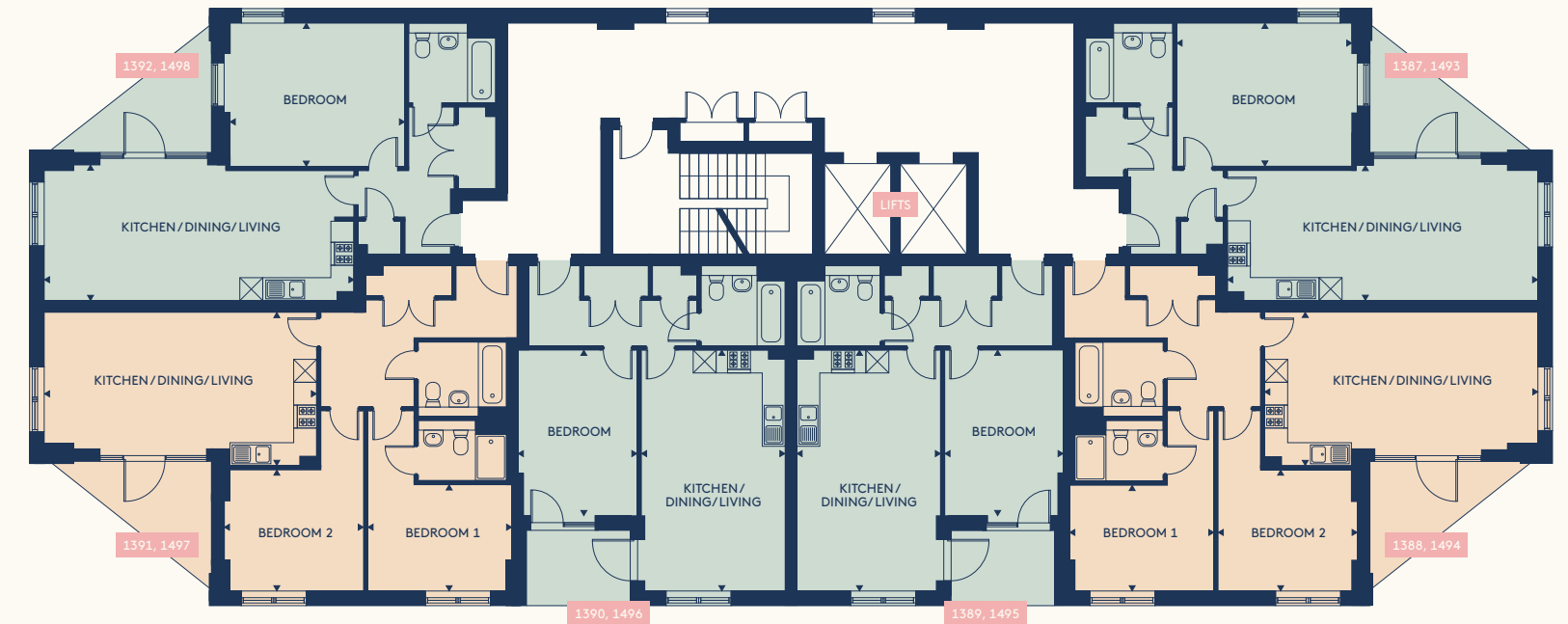


<b>APT 963</b> <b>APT 1069</b> <b>APT 1175</b> <b>APT 1281</b>	KITCHEN/DINING/LIVING 8.1 x 3.6 m   26'8" x 11'8" ft BEDROOM 1 4.6 x 3.8 m   15'0" x 12'3" ft EXTERNAL AREA 7.1 sqm   76.4 sqft TOTAL INTERNAL AREA 61.7 sqm   664.1 sqft	<b>APT 964</b> <b>APT 1070</b> <b>APT 1176</b> <b>APT 1282</b>	KITCHEN/DINING/LIVING 7.2 x 4.0 m   23'5" x 13'2" ft BEDROOM 1 3.8 x 2.8 m   12'4" x 9'1" ft BEDROOM 2 3.7 x 3.2 m   12'0" x 10'4" ft EXTERNAL AREA 7.1 sqm   76.4 sqft TOTAL INTERNAL AREA 76.1 sqm   819.1 sqft	<b>APT 965</b> <b>APT 1071</b> <b>APT 1177</b> <b>APT 1283</b>	KITCHEN/DINING/LIVING 6.3 x 3.8 m   20'8" x 12'4" ft BEDROOM 1 4.4 x 3.1 m   14'3" x 10'2" ft EXTERNAL AREA 5.4 sqm   58.1 sqft TOTAL INTERNAL AREA 52.7 sqm   567.3 ft	<b>APT 966</b> <b>APT 1072</b> <b>APT 1178</b> <b>APT 1284</b>	KITCHEN/DINING/LIVING 6.3 x 3.8 m   20'8" x 12'4" ft BEDROOM 1 4.4 x 3.1 m   14'3" x 10'2" ft EXTERNAL AREA 5.4 sqm   58.1 sqft TOTAL INTERNAL AREA 52.7 sqm   567.3 ft	
<b>APT 967</b> <b>APT 1073</b> <b>APT 1179</b> <b>APT 1285</b>	KITCHEN/DINING/LIVING 7.2 x 4.0 m   23'5" x 13'2" ft BEDROOM 1 3.8 x 2.8 m   12'4" x 9'1" ft BEDROOM 2 3.7 x 3.2 m   12'0" x 10'4" ft EXTERNAL AREA 7.1 sqm   76.4 sqft TOTAL INTERNAL AREA 76.1 sqm   819.1 sqft	<b>APT 968</b> <b>APT 1074</b> <b>APT 1180</b> <b>APT 1286</b>	KITCHEN/DINING/LIVING 8.1 x 3.6 m   26'8" x 11'8" ft BEDROOM 1 4.4 x 3.8 m   14'5" x 12'3" ft EXTERNAL AREA 7.1 sqm   76.4 sqft TOTAL INTERNAL AREA 62.1 sqm   668.4 sqft					

Please note, floor plans and dimensions are taken from architectural drawings and are for guidance only. Dimensions stated are within a tolerance of plus or minus 150mm. Overall dimensions are usually stated and there may be projections into these. Kitchen and bathroom layouts are indicative only.

1 BED ● 2 BED ●

# FLOORPLANS - 13F/14F

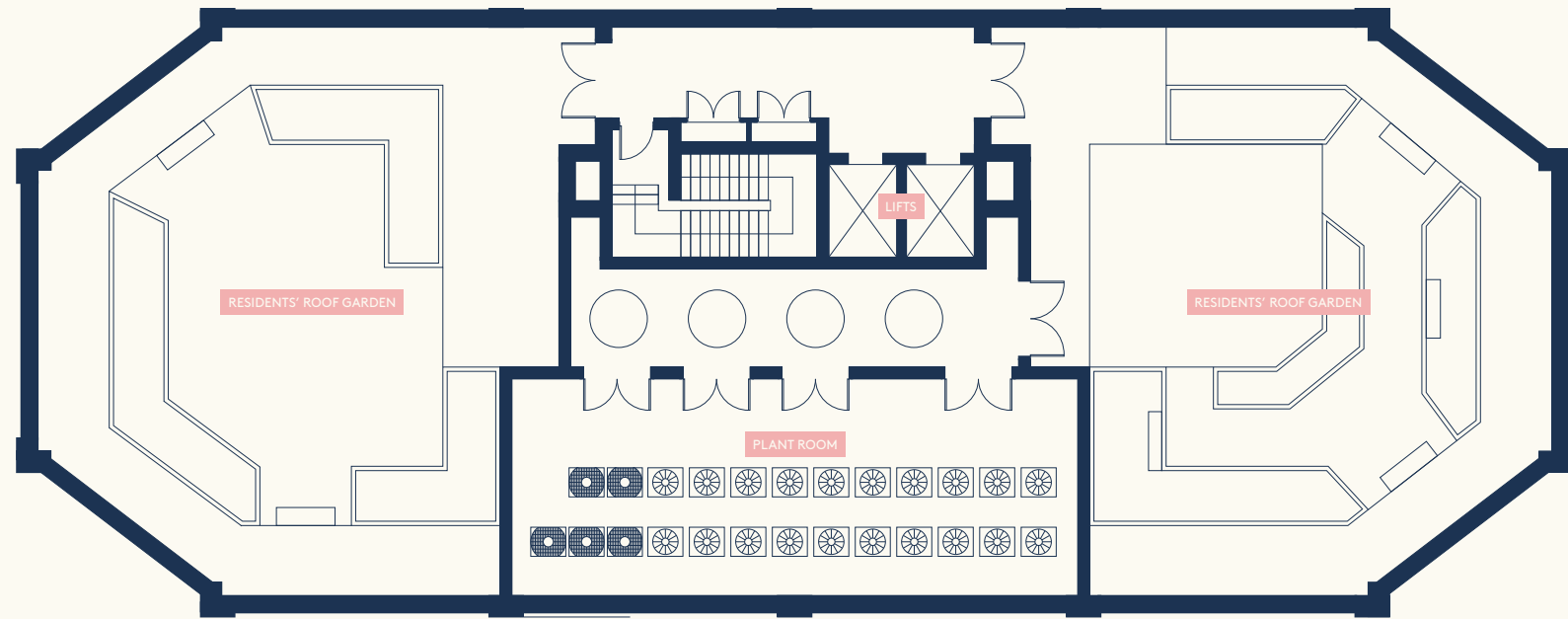


<b>APT 1387</b> <b>APT 1493</b>	KITCHEN/DINING/LIVING 8.1 x 3.6 m   26'8" x 11'8" ft BEDROOM 1 4.6 x 3.8 m   15'0" x 12'3" ft EXTERNAL AREA 7.1 sqm   76.4 sqft TOTAL INTERNAL AREA 61.7 sqm   664.1 sqft	<b>APT 1388</b> <b>APT 1494</b>	KITCHEN/DINING/LIVING 7.2 x 4.0 m   23'5" x 13'2" ft BEDROOM 1 3.8 x 2.8 m   12'4" x 9'1" ft BEDROOM 2 3.7 x 3.2 m   12'0" x 10'4" ft EXTERNAL AREA 7.1 sqm   76.4 sqft TOTAL INTERNAL AREA 76.1 sqm   819.1 sqft	<b>APT 1389</b> <b>APT 1495</b>	KITCHEN/DINING/LIVING 6.3 x 3.8 m   20'8" x 12'4" ft BEDROOM 1 4.4 x 3.1 m   14'3" x 10'2" ft EXTERNAL AREA 5.4 sqm   58.1 sqft TOTAL INTERNAL AREA 52.7 sqm   567.3 ft	<b>APT 1390</b> <b>APT 1496</b>	KITCHEN/DINING/LIVING 6.3 x 3.8 m   20'8" x 12'4" ft BEDROOM 1 4.4 x 3.1 m   14'3" x 10'2" ft EXTERNAL AREA 5.4 sqm   58.1 sqft TOTAL INTERNAL AREA 52.7 sqm   567.3 ft	
<b>APT 1391</b> <b>APT 1497</b>	KITCHEN/DINING/LIVING 7.2 x 4.0 m   23'5" x 13'2" ft BEDROOM 1 3.8 x 2.8 m   12'4" x 9'1" ft BEDROOM 2 3.7 x 3.2 m   12'0" x 10'4" ft EXTERNAL AREA 7.1 sqm   76.4 sqft TOTAL INTERNAL AREA 76.1 sqm   819.1 sqft	<b>APT 1392</b> <b>APT 1498</b>	KITCHEN/DINING/LIVING 8.1 x 3.6 m   26'8" x 11'8" ft BEDROOM 1 4.6 x 3.8 m   15'0" x 12'3" ft EXTERNAL AREA 7.1 sqm   76.4 sqft TOTAL INTERNAL AREA 62.1 sqm   668.4 sqft					

Please note, floor plans and dimensions are taken from architectural drawings and are for guidance only. Dimensions stated are within a tolerance of plus or minus 150mm. Overall dimensions are usually stated and there may be projections into these. Kitchen and bathroom layouts are indicative only.

1 BED ● 2 BED ●

## FLOORPLANS – 15F (ROOF GARDEN)



Please note, floor plans and dimensions are taken from architectural drawings and are for guidance only.



Computer Generated Image

## CONTACT US

For more information about Bookbinder Point, please contact our retained agents, One Global Property Services, who will be able to assist.

### SINGAPORE HEADQUARTERS

127 Devonshire Road, Singapore 239885  
(By Appointment Only)  
T: (+65) 8614 9874  
E: enquirySG@ogpsglobal.com

### UAE OFFICE

The Place, 24th Floor, The One Tower, Sheikh Zayed Road, Dubai, United Arab Emirates  
T: (+971) 0 4 425 8169  
E: enquiryMEA@ogpsglobal.com

### HONG KONG OFFICE

Unit 704 Jubilee Centre, 18 Fenwick Street, Wanchai, Hong Kong  
T: (+852) 5975 2233  
E: enquiryHK@ogpsglobal.com

### SOUTH AFRICA OFFICE

Cube Workspace, The Pavilion, Corner Portswood & Dock Road, V&A Waterfront, Cape Town 8001, South Africa  
T: (+27) 021 140 3553  
E: enquiryMEA@ogpsglobal.com

### MALAYSIA OFFICE

Menara BT, Level 1 & 2, Tower 3, Avenue 7, Horizon 2, Bangsar South City No. 8, Jalan Kerinchi, 59200 Kuala Lumpur, Malaysia  
T: (+60) 16 208 0718  
E: enquiryMY@ogpsglobal.com

### UK OFFICE

50 Grosvenor Hill, London, W1K 3QT  
T: (+44) 0203 143 8000  
E: enquiryUK@ogpsglobal.com

### A JOINT VENTURE:



### SALES AGENTS:

ONE GLOBAL  
PROPERTY SERVICES

[bookbinderpoint.com](http://bookbinderpoint.com)

Bookbinder Point is a marketing name and may not form part of the development's address. These particulars are not considered to be a formal offer, they are for information purposes only and to provide an overview of the property. They are not taken as forming any part of a resulting contract, nor to be relied upon as statements or representations of fact. Whilst every care has been taken in their preparation, no liability can be accepted for their inaccuracy. All travel times and distances mentioned are approximate and for guidance only. Sources: tfl.gov.uk, crossrail.co.uk & google.co.uk/maps. All illustrative maps are not to scale and for guidance only rather than accurate representations of distance and exact locations. Intending purchasers must satisfy themselves as to the correctness of these particulars which are issued on the understanding that all negotiations are conducted through the developer or their agent. These particulars are believed to be correct at the time of issue and any areas, measurements or dimensions referred to are indicative only and have been taken from architect's current drawings which may be subject to change during the course of construction. In view of continuing improvements policy the detailed specification and/or layouts may change. CGIs are artist's impressions and indicative of finished product. Some items are optional extras and are not included.



[BOOKBINDERPOINT.COM](http://BOOKBINDERPOINT.COM)